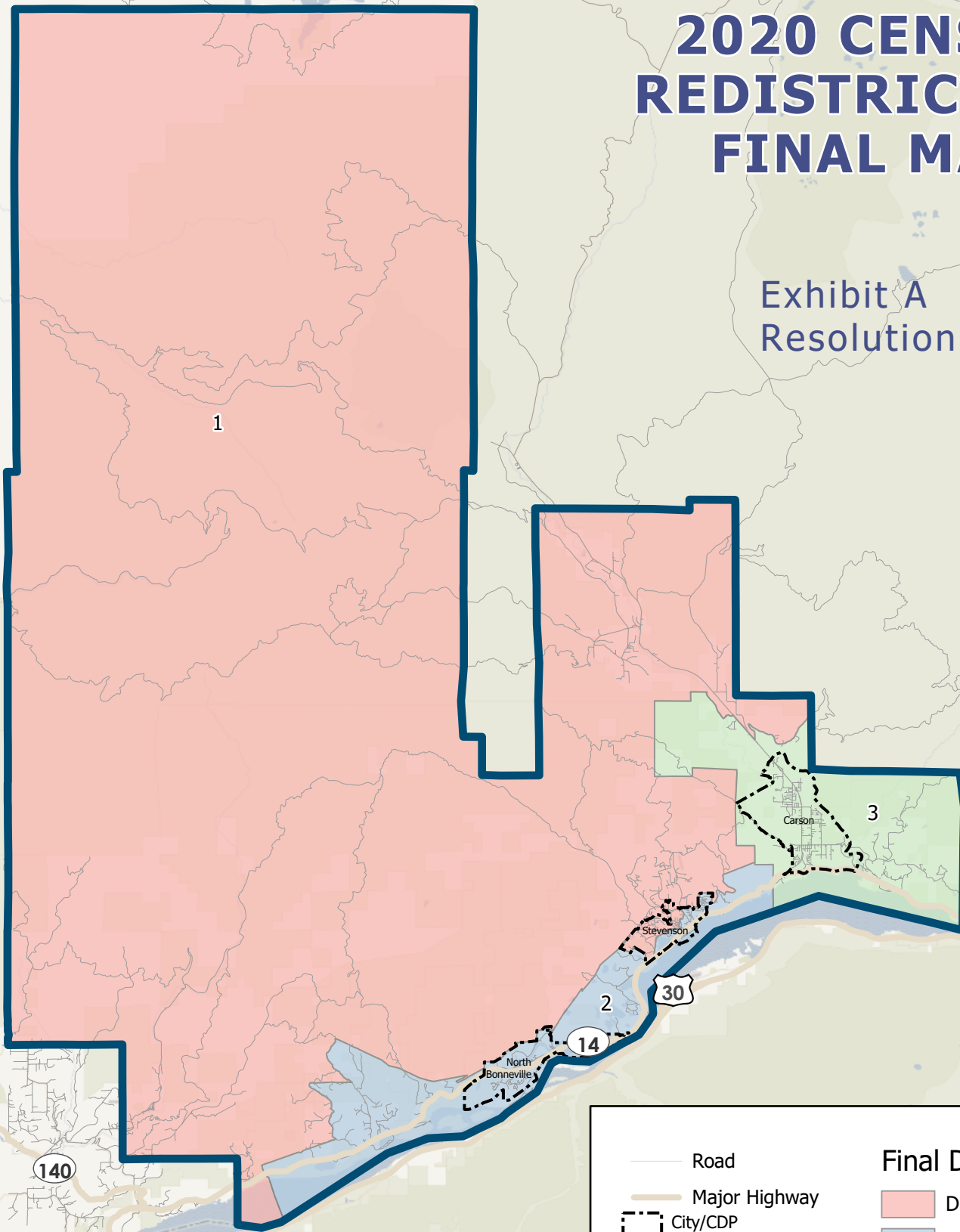


# PORT OF SKAMANIA 2020 CENSUS REDISTRICTING FINAL MAP

Exhibit A  
Resolution 7-2022



Legend:

- Road
- Major Highway
- City/CDP

**Final Districts**

- District 1
- District 2
- District 3

Scale: 0, 5, 10 Miles

\*Only 2020 Census Blocks that have centroids within the existing district boundary are accounted for in the statistics that accompany this map. Census Blocks with centroids outside the existing district boundary are not accounted for in these statistics.

## Ideal Population Criterion

Ideal Population	2,747
Overall Range	2.6%
< 5.0%	5.0 - 10.0%
> 10.0%	

## Total Population & Deviation per District

District ID	Total Population	Over / Under Ideal	Deviation From Ideal
1	2,702	-45	-1.7%
2	2,766	19	0.7%
3	2,774	27	1.0%

## Total Population by Race/Ethnicity per District

District ID	White	Black or African American	American Indian or Alaska Native	Asian	Native Hawaiian and Pacific Islander	Some Other Race	Two or More Races	Hispanic/Latino
1	87.8%	0.2%	1.3%	1.2%	0.0%	0.7%	6.4%	4.0%
2	80.8%	1.7%	2.5%	1.0%	0.5%	1.0%	6.0%	6.4%
3	80.8%	0.1%	1.5%	0.5%	0.0%	0.4%	7.8%	8.9%

2020 Census P.L 94-171 Redistricting Data Summary Files Total Population by race and Hispanic/Latino origin.

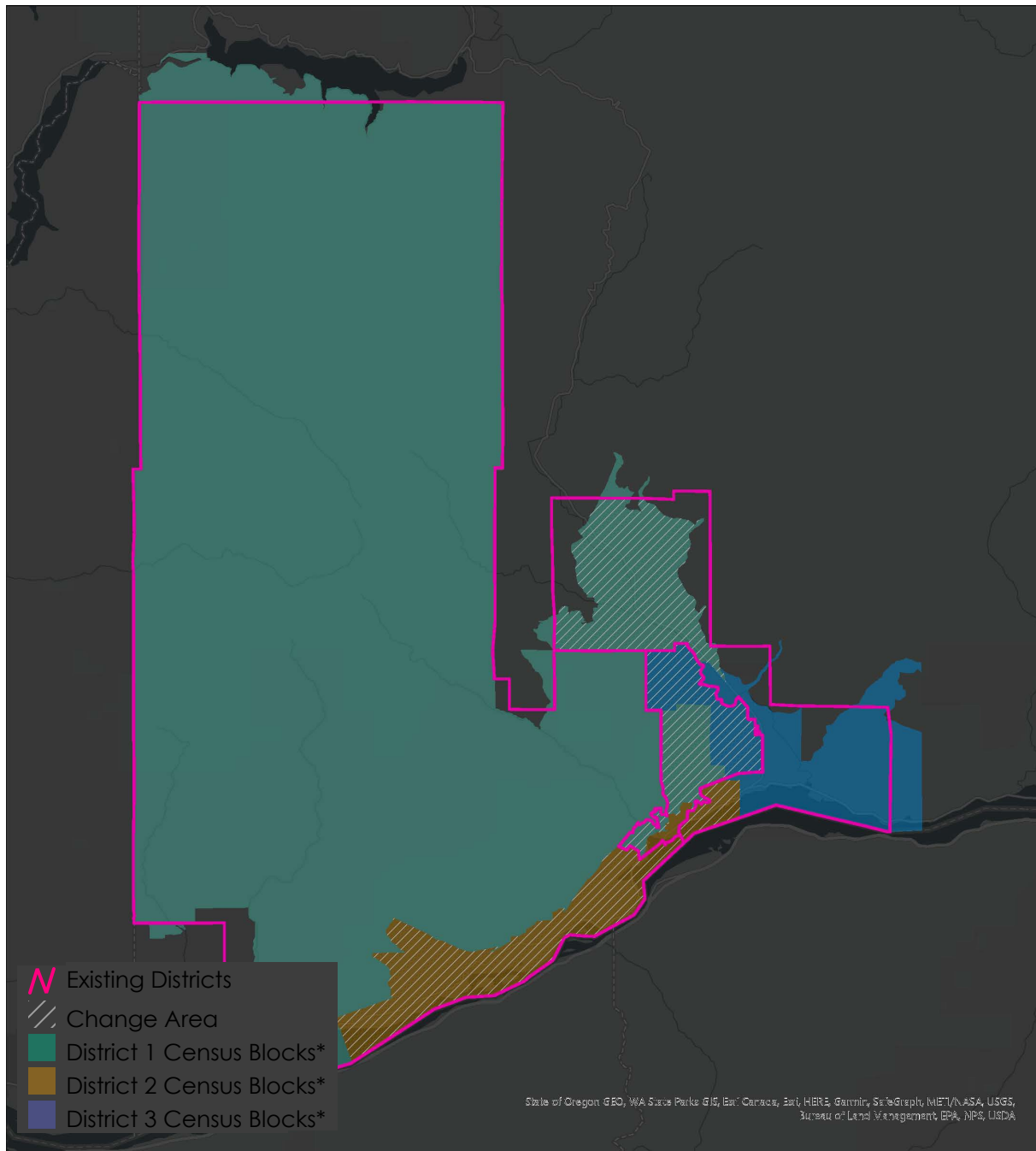
## CVAP by Race/Ethnicity per District

District ID	White	Black or African American	American Indian or Alaska Native	Asian	Native Hawaiian and Pacific Islander	Two or More Races	Hispanic/Latino
1	92.6%	0.3%	1.0%	2.2%	0.0%	1.7%	2.1%
2	91.4%	0.1%	0.3%	1.0%	0.7%	2.4%	4.0%
3	88.5%	0.1%	3.7%	1.1%	0.0%	1.6%	4.8%

2015-2019 (5-year) American Community Survey (ACS) Citizen Voting-age Population (CVAP) by Race and Ethnicity Special Tabulation. Some Other Race category not included within the ACS special tabulation.

\*Rounding may lead to summation of race/ethnicity percentages not equal to 100% (+/- 1%)

**\*Only 2020 Census Blocks that have centroids within the existing district boundary are displayed in the map and accounted for in these statistics. Census Blocks with centroids outside the existing district boundary are not accounted for in these statistics.**



## Metadata

Run Time Stamp: 2021-12-13 17:36:49  
Workflow Directory: X:\F0350\_Port\_of\_Skamania\Projects\Alteryx\  
District Scenario: File: gdb:X:\F0350\_Port\_of\_Skamania\Data\Redist.gdb\|Districts\_Scenario\_1

**\*Only 2020 Census Blocks that have centroids within the existing district boundary are displayed in this map and accounted for in the statistics accompanying this map. Census Blocks with centroids outside the existing district boundary are not accounted for in these statistics.**